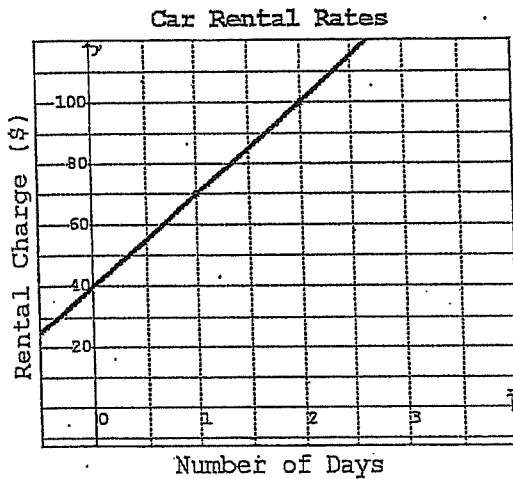


Hand In – Slope 2

Name: _____

Total: _____/9

1. For the following graph, answer the questions below:



- Determine the dependent and independent variables of the relation.
- Determine the slope of the line.
- What is the meaning of the value of the slope?
- Write an equation using letters for the relation.
- Using the equation of the line, find the total charge of the rental for 3 days.
- Using the equation of the line, find the number of days the car was used, if the total charge was \$200.

Hand-In – Application

Name: _____

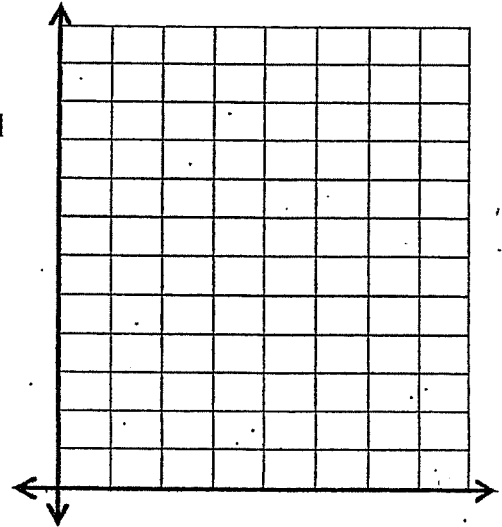
Total: _____ **11**

The LSRCSS is planning a band trip to Minneapolis. There are two different travel agencies, each offering a different price. Travel agency A will charge the school \$400 plus a cost of \$50 per student. Travel agency B will charge the team \$250 plus a cost of \$100 per student.

- a) Identify the independent and dependent variables.
- b) Create a table of values for each team (based on the first 5 students for each).

c) Graph both Agency A and Agency B on the following chart.

d) Create an equation of the line for both Agency A and Agency B.



e) If there were 3 students participating in the trip, which agency would have the lower cost? **Explain.**

f) If there were 20 students participating in the trip, which agency would have the lower cost? **Explain.**

g) Where do the lines cross – what is the cost? What does this mean?